



HERING Products for EV charging parks

Sanitary facilities and canopies





Charging infrastructure that does more

Electromobility is fundamentally transforming the way we move – and with it, the requirements for charging infrastructure. Modern EV charging parks are no longer just charging stations: they are places where people spend time.



Today, users expect more than just electricity. They are looking for comfort, service, and an environment where waiting time can be spent in a useful and enjoyable way.



Holistic solutions from a single source:

The HERING Group develops modular restroom facilities and canopies for modern EV charging parks – thoughtfully designed, flexible, and delivered from a single source.

- Planning & concept development
- Construction & implementation
- Operation & service

HERING – Experience you can build on!

The HERING Group is an internationally operating company with strong roots in its home location of Burbach-Holzhausen. For more than 130 years, we have been planning

challenging public-space construction projects together with our customers, developing solutions for the rail sector, and creating impressive architectural precast concrete façades.

With more than 700 employees, solid craftsmanship meets innovative engineering expertise.



Architectural concrete



Transport stations



Track and civil engineering



Heavy machinery and logistics



Sanitary facilities



Coatings



Modern sanitary facilities for EV charging parks

Our restroom facilities for charging parks make a significant contribution to enhancing the quality of stay at your locations. They are specifically designed for high-frequency sites and provide your customers with a clean and safe environment during charging times.

The modular sanitary solutions can be flexibly integrated into existing or new charging parks and adapted to a wide range of site requirements. High-quality materials and a robust, durable concrete construction ensure reliability and an above-average service life. At the same time,

intelligent features – from barrier-free access and automated cleaning systems to modern payment solutions – provide maximum user comfort and cost-efficient operation.



One project – one solution: Restroom facility for the EnBW charging park in Bramsche



The EnBW charging park in Bramsche features a modern restroom facility with a high level of comfort and hygiene. The timber façade blends harmoniously into the surrounding environment, while automatic cleaning systems ensure cleanliness and low maintenance requirements.



From construction to operation – everything from a single source

In addition to the planning and construction of sanitary facilities, HERING Sanikonzept GmbH also provides comprehensive operation services for your sanitary facility – from routine cleaning to technical monitoring.

Overview of our services:

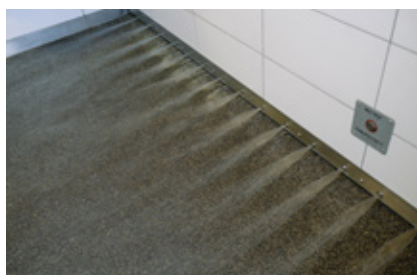
- Maintenance of the entire restroom facility
- Annual electrical safety inspections
- Routine cleaning tailored to your requirements
- Repair of all technical defects and damage
- 24/7 in-house standby service



Our automatic cleaning systems ensure maximum hygiene!



Toilet seat cleaning – Automatic cleaning, disinfection, and drying after every use.



Floor cleaning – Efficient floor cleaning and waste disposal using water and pressure.



Urifloor – Automatic flushing of the stainless-steel floor basin beneath the urinal.

Long-lasting protection for modern charging infrastructure

With the surface protection solutions from protect & clean®, restroom facilities in EV charging parks are optimally prepared for the demands of high-traffic locations. The specially developed coating systems reliably protect surfaces against graffiti, dirt, and external influences, making a significant contribution to the long-term preservation of the facilities' value.



Modular canopies for modern charging parks

The modular canopy systems from HERING Group transform simple charging areas into high-quality, future-oriented charging parks that go far beyond pure energy supply. They create a modern infrastructure for electromobility that intelligently combines functionality, comfort, and design.

The structures provide reliable protection against weather conditions such as rain, snow, hail, and intense sunlight. This not only increases user comfort, but also ensures long-term protection of the technical charging infrastructure. At the same time, the overall quality of stay is significantly enhanced – charging times become more pleasant, and the location

gains attractiveness and a welcoming character.

Canopy solutions can be equipped with integrated or roof-mounted photovoltaic modules, enabling sustainable energy generation directly on site.



Intelligently integrated photovoltaics

Modular canopies from HERING Group with integrated photovoltaics – individually customizable, high-performance, and designed for sustainable on-site energy generation.



Roof-mounted solution



Organic photovoltaics



Glass-glass PV modules



The right canopy for every project!

Our canopy systems are based on modular constructions with a high degree of prefabrication, reducing installation times and enabling cost-efficient project implementation.

The systems are suitable for a wide range of applications:

- Fast-charging parks along highways
- Charging infrastructure for commercial and industrial sites
- Municipal charging parks
- Parking areas with charging points
- Mobility hubs and transport interchanges



Salzgitter-Lebenstedt



Türkismühle ZOB



Mettmann-Stadtwald



Berlin



Siegen

System advantages

Your advantages at a glance:

- Modular all-in-one solution – from planning to service
- Increased comfort and improved quality of stay for users
- Modular design for flexible planning
- Individually adaptable architecture for different site requirements
- Optional integration of photovoltaic systems

Service solutions for your canopy systems

- Replacement of defective components such as brackets or metal panels to extend service life
- Regular inspections for early damage prevention
- Professional cleaning for value retention and maintenance
- Recoating and anti-graffiti protection for an attractive appearance and protection against environmental influences
- Maintenance and inspection of photovoltaic systems



HERING Bau GmbH & Co. KG
Neuländer 1 | Holzhausen
D-57299 Burbach
T +49 (0) 2736 27-0
systeme@hering-bau.de



www.hering-gruppe.de

HERING Sanikonzept
Hoorwaldstraße 46 | Holzhausen
D-57299 Burbach
T +49 (0) 2736 27-260
wc@hering-sanikonzept.de